

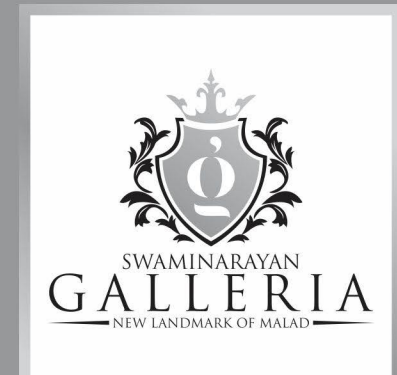
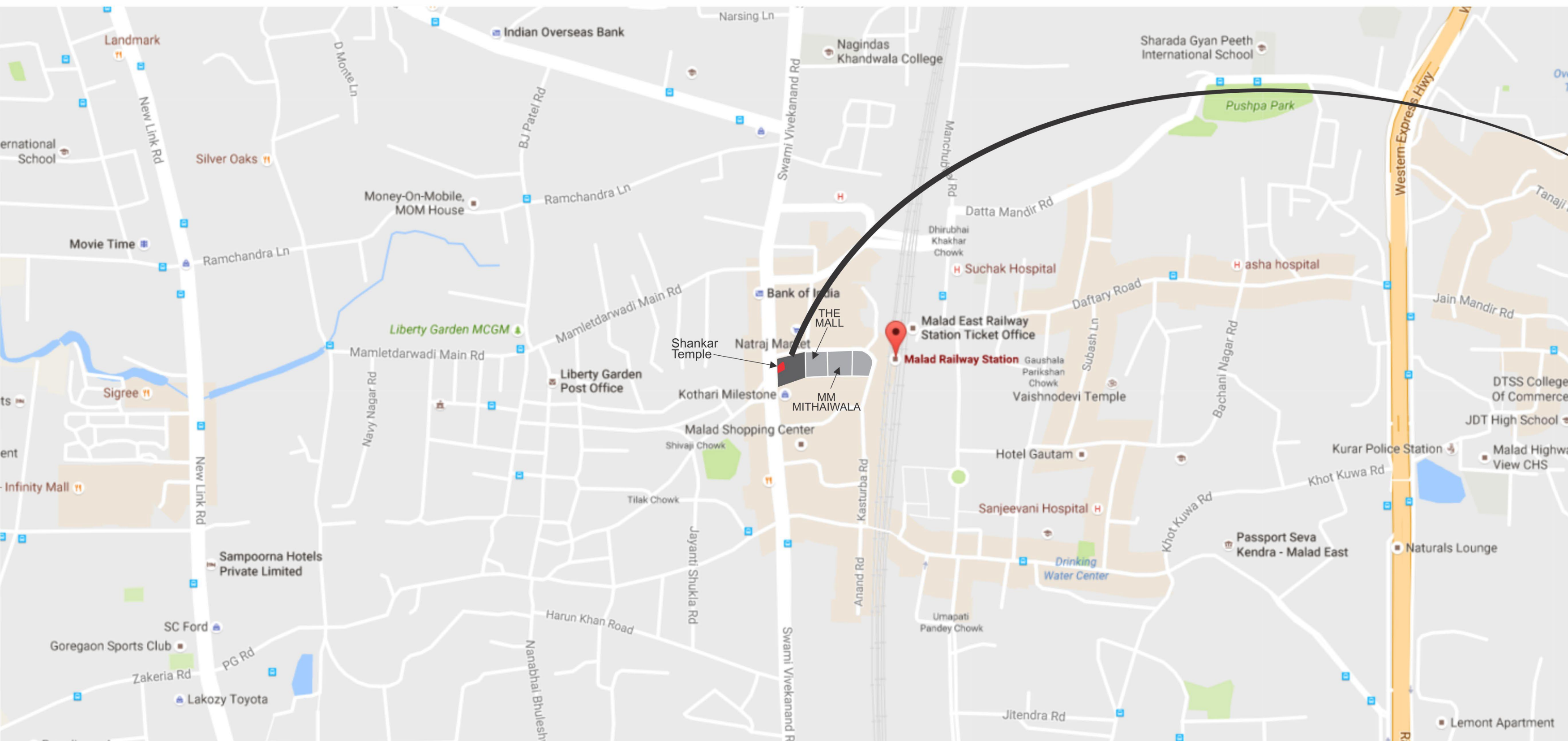


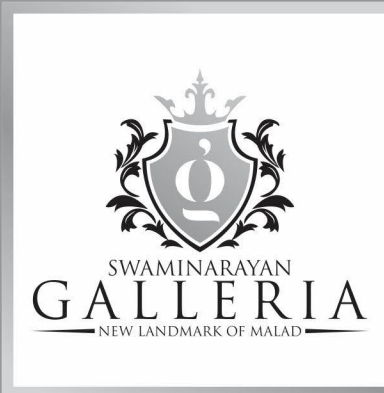
SHOPS & APARTMENTS

NEW LANDMARK OF MALAD

DHARMADEV INFRASTRUCTURE LTD AND UNITED HOUSING CORPORATION BRINGS YOU THE NEW LANDMARK OF MALAD, "SWAMINARAYAN GALLERIA". WITH UTMOST PRIME LUXURY AND COMFORT IN BOTH COMMERCIAL AND RESIDENTIAL WE HAVE ALSO DESIGNED THE PROJECT IN A WAY TO KEEP IT SIMPLE WITH A EASE OF CONVENIENCE TO CONNECT MALAD RLY STATION, WESTERN EXPRESS HIGHWAY, S. V. ROAD AND LINK ROAD.







KOTHARI MALL



PROJECT AMENITIES

STATE-OF-THE-ART GYMNASIUM

WITH THE BEST IN FITNESS TECHNOLOGY AT YOUR DOORSTEP, WORKING THE STRESS OUT WILL ALWAYS BE A PLEASURE. LOSING INCHES WOULD BE MUCH EASIER NOW.

CCTV IN COMMON AREAS

CONSTANT VIGILANCE WOULD MEAN A MORE SAFE AND SECURE ENVIRONMENT FOR YOUR LOVED ONES.

ADVANCE FIREFIGHTING SYSTEM

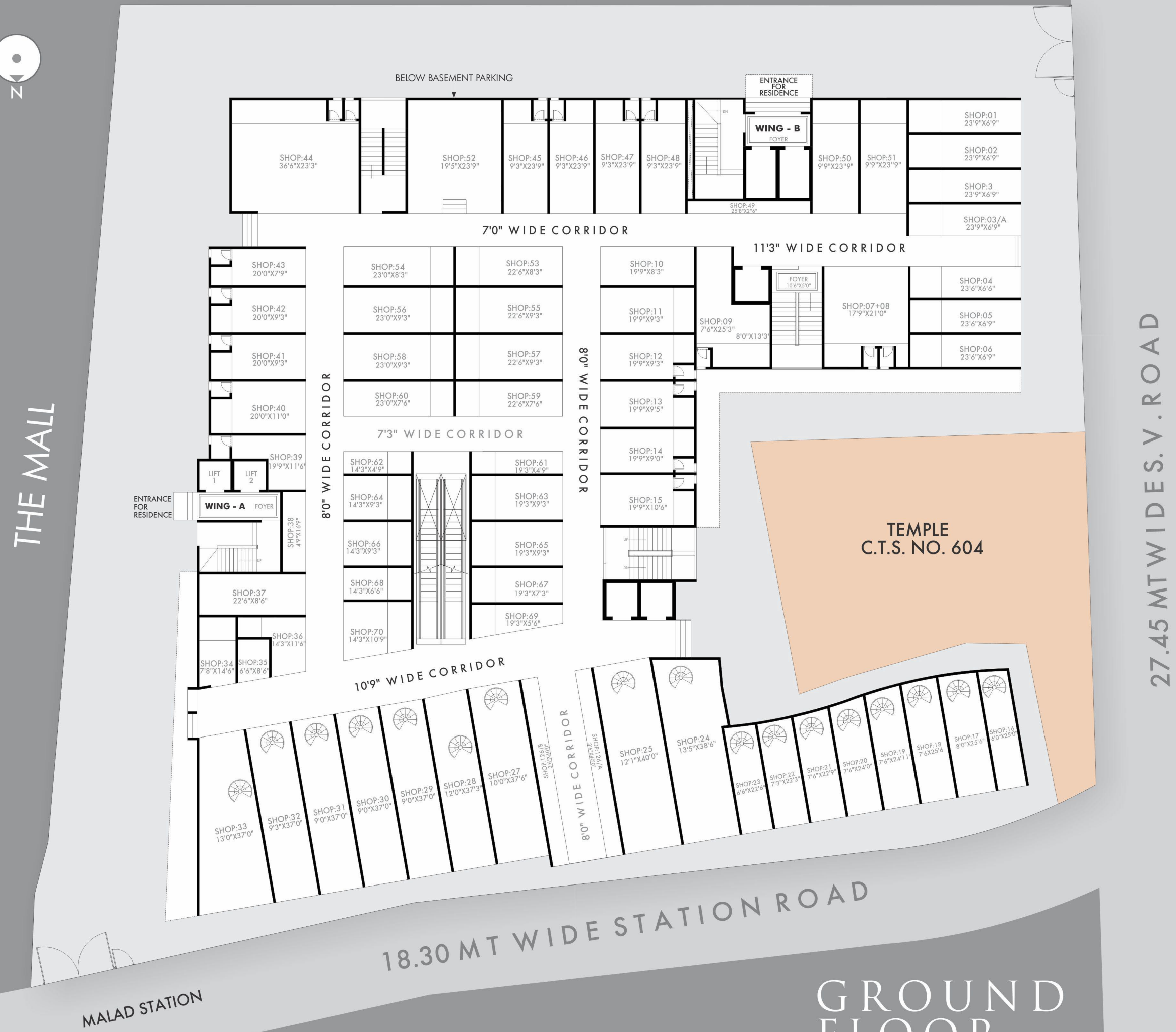
LIFE FULL OF FUN AND FROLIC DEDICATED TO CHILDREN SO THAT THEY GROW AND BUILD THEMSELVES FOR A FITTER AND MORE ACTIVE LIFESTYLE.

LAVISH ENTRANCE LOBBY

AN ORNATE ENTRANCE LOBBY, DESIGNED TO RAISE EYEBROWS AND UP YOUR GLAMOUR QUOTIENT. EACH TIME, THE WELCOME TO YOUR APARTMENT FEELS AS SPECIAL AS YOU ARE.

INTERNAL AMENITIES

- ELEGANT HIGH QUALITY VITRIFIED TILES ALONG WITH SKIRTING IN THE ENTIRE FLAT.
- POWDER COATING ALUMINUM SLIDING WINDOW USING DO-MOULD SYSTEM, WITH ONE WAY MIRROR GLASS AND MARBLE /GRANITE SILL.
- DECORATIVE LAMINATED, FIRE RESISTANT MAIN FLUSH DOOR WITH HIGH QUALITY BRASS FITTING.
- GRANITE KITCHEN PLATFORM WITH STAINLESS STEEL SINK AND TILES UPTO BEAM LEVEL ABOVE PLATFORM.
- CENTRALIZE A.C. IN ENTIRE COMMERCIAL COMPLEX
- ESCALATORS FROM GROUND TO 2ND / SEPARATE ELEVATOR FOR RESIDENCE
- AMPLE BASEMENT PARKING



THE MALL

27.45 MT WIDES. V. ROAD

MALAD STATION

18.30 MT WIDE STATION ROAD

GROUND FLOOR

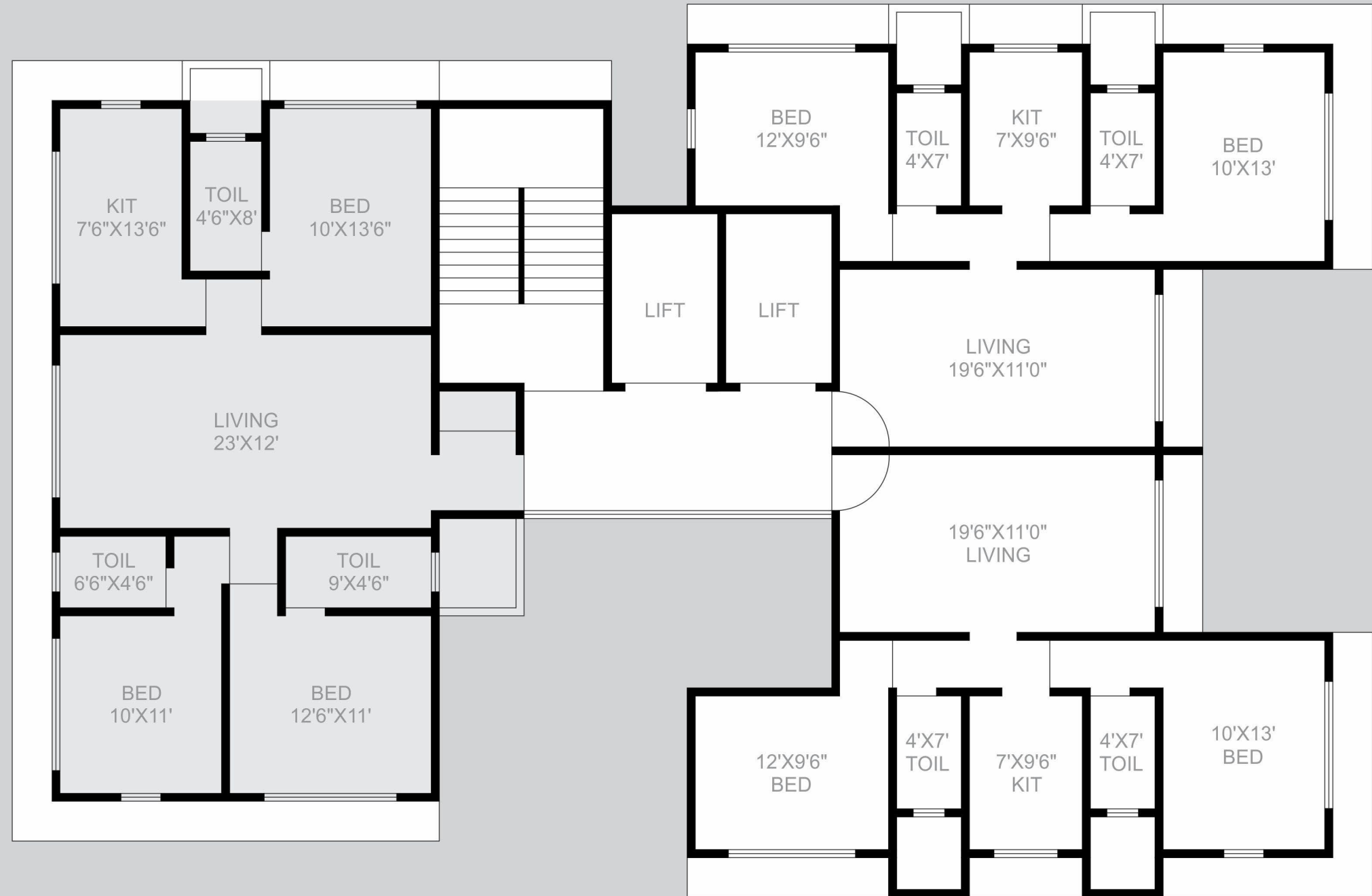
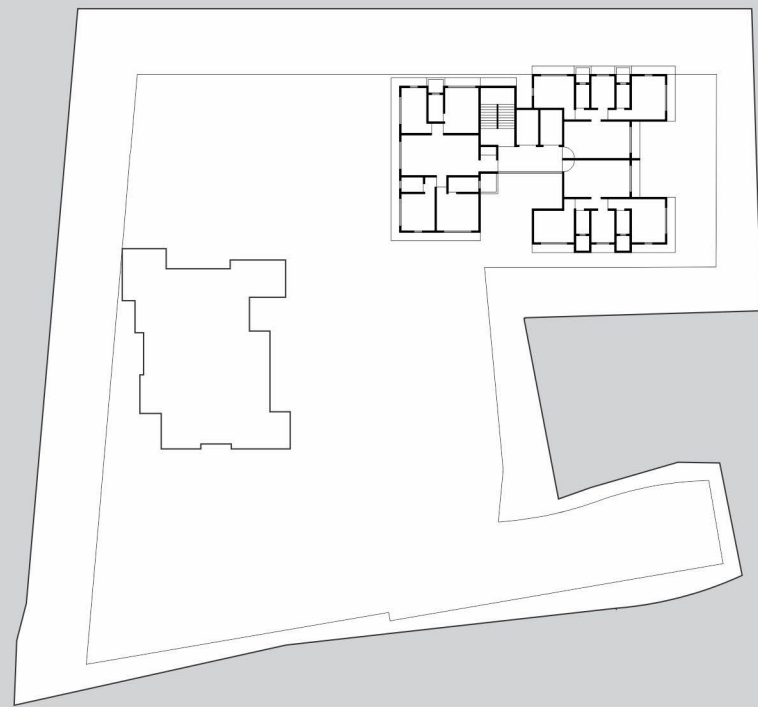


TEMPLE
C.T.S. NO. 604

TEMPLE
C.T.S. NO. 604

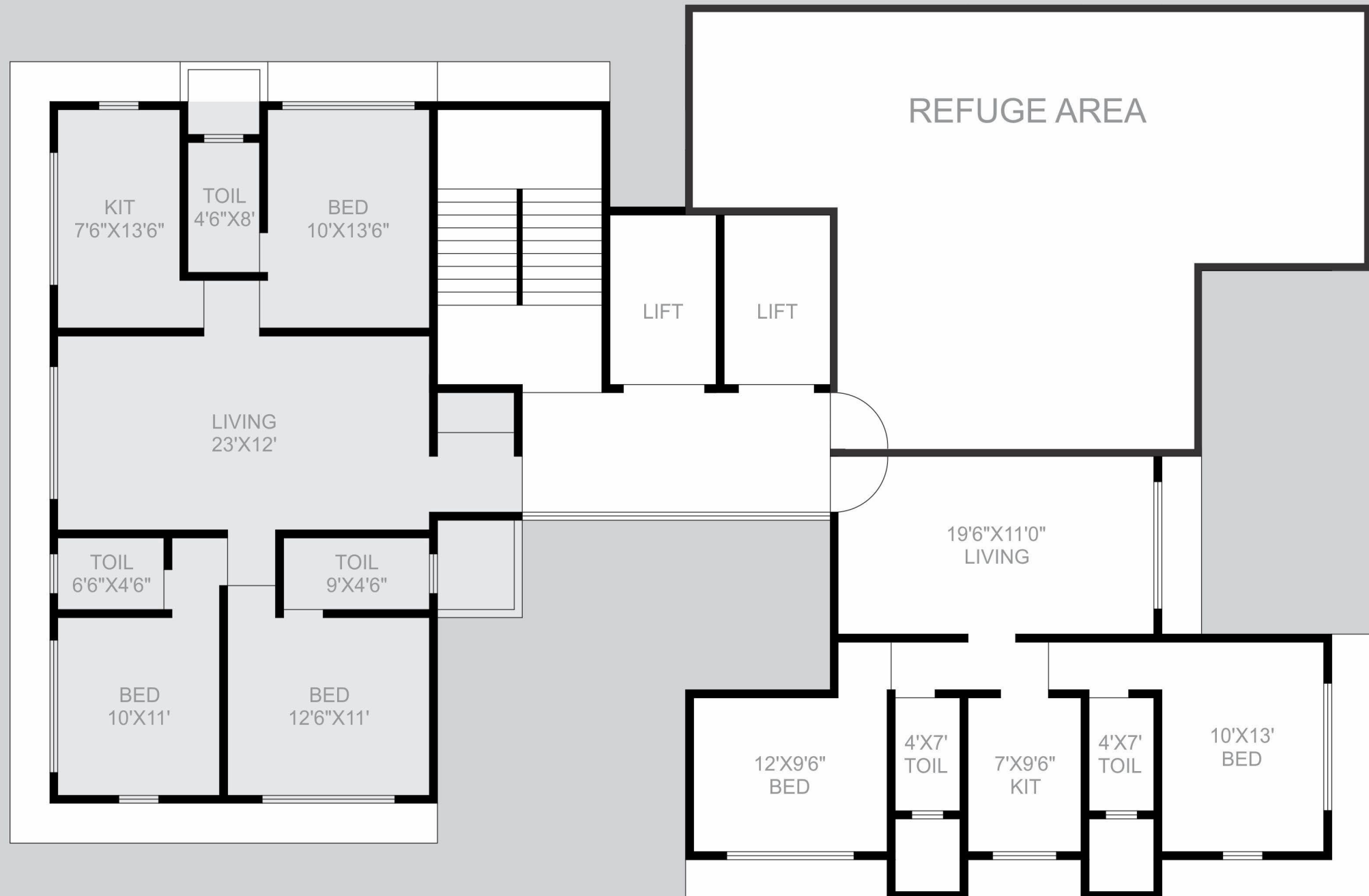
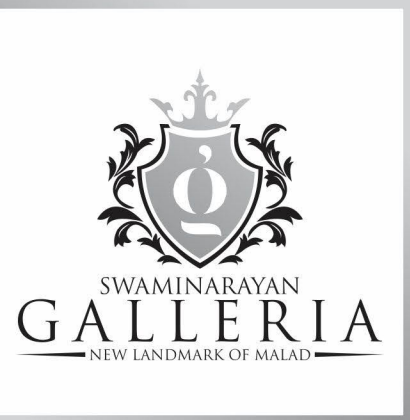
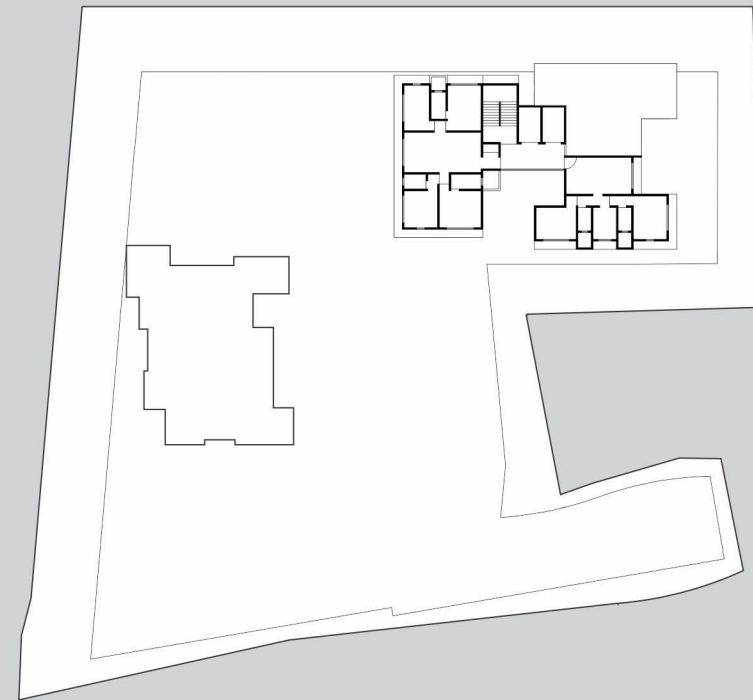
TERRACE OPEN TO SKY

4TH TO 6TH FLOOR

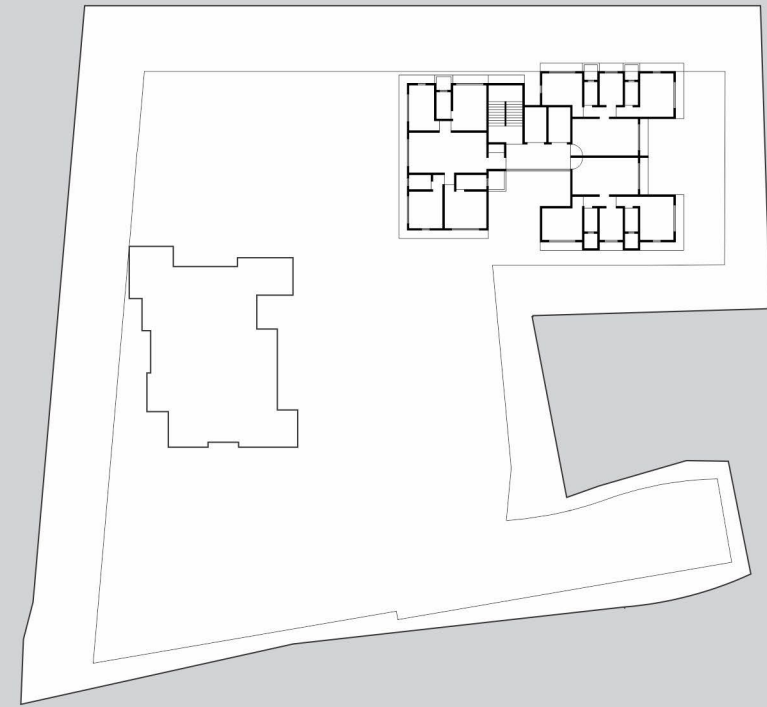


2BHK
UNIT PLAN

8TH TO 14TH FLOOR



3BHK UNIT PLAN



A PROJECT BY



ARCHITECT



JAY PRAVEEN MONGA
B. TECH CIVIL, MUMBAI

OPP. NATRAJ MARKET, S.V. ROAD & STATION ROAD JUNCTION,
MALAD (WEST), MUMBAI 400064.